

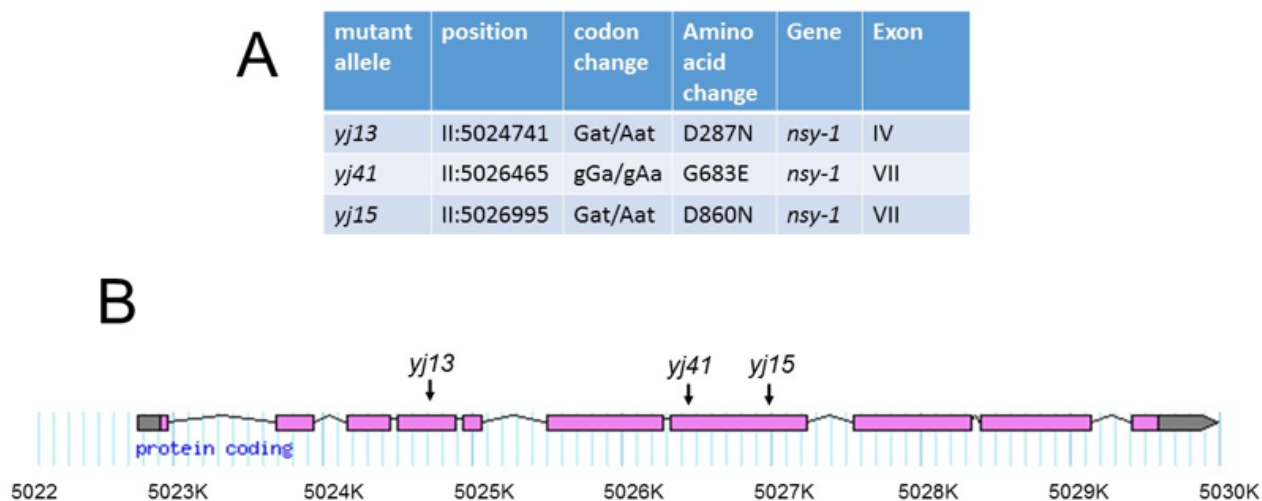
## Three *C. elegans* *srf-6* mutants carry *nsy-1* mutations (*srf-6* is *nsy-1* I)

Nicholas D. Van Sciver<sup>1,2</sup>, Jennifer O. Pulkowski<sup>1</sup> and Samuel M. Politz<sup>1§</sup>

<sup>1</sup>Department of Biology and Biotechnology, Worcester Polytechnic Institute, Worcester, MA

<sup>2</sup>Present address: McArdle Laboratory for Cancer Research, University of Wisconsin, Madison, WI

<sup>§</sup>To whom correspondence should be addressed: spolitz@wpi.edu



**A.** Table of *srf-6* mutations shown as output of the CloudMap in silico complementation tool. Positions of altered SRF-6 amino acids are numbered as described (Sagasti et al., 2001) **B.** Intron-Exon Map of the *nsy-1* gene showing the position of point mutations originally described as *srf-6* mutations.

### Description

Mutations in the *C. elegans* gene *srf-6* result in an alteration in surface composition detected with monoclonal antibody (mAb), which is specific for the wild-type L1 surface. In *srf-6* mutants, all larval stages display the mAb epitope (Hemmer et al., 1991; Grenache et al., 1996). This suggests that *srf-6* might be a component of a genetic switch that operates in wild-type to turn off expression of the epitope after the L1 stage. We were therefore interested in identifying the *srf-6* DNA sequence.

Genomic DNA was isolated from *srf-6(yj13)*, *srf-6(yj41)*, and *srf-6(yj15)* worms grown on plates, using a Gentra Puregene Kit. Whole genome sequencing of DNA was carried out at the Caltech Genomics Facility. DNA sequences from each mutant were analyzed using the CloudMap workflow (Minevich et al., 2012) on the Galaxy Internet platform (Afgan et al., 2018). After aligning sequences with the *C. elegans* reference genome, variants were called using the GATK Unified Genotyper. To remove variants that were shared in common among all three *srf-6* mutants, the GATK Select Variants plugin was used to subtract the union of two mutant variant sets from the third one. This was repeated for all three pairwise subtractions to produce sets of mutant-specific variants. The effect of each variant on protein structure was predicted, and the resulting sets of predicted changes were merged and subjected to the Cloudmap in silico complementation tool, which sorts variants according to the genetic location and *C. elegans* gene in which they occur.

Results of the *in silico* complementation analysis are shown in Figure 1A. Each strain contained a G to A transition in a chromosome II gene sequence, F59A6.1, which corresponds to the gene *nsy-1*. This result is consistent with the mutations having been induced by ethylmethanesulfonate (Hemmer et al., 1991), and is also consistent with the previous assignment of *srf-6(yj13)* to linkage group II (Grenache et al., 1996). Each mutation resulted in a non-conservative amino acid substitution in the encoded protein, including an aspartic acid changed to asparagine in *srf-6(yj13)* and *srf-6(yj15)*, and a glycine changed to

glutamic acid in *srf-6(yj41)*. Positions of these mutations are shown in Figure 1B. Mutations carried by *srf-6(yj15)* and *srf-6(yj41)* were located in exon 7, which contains the kinase catalytic domain (Sagasti et al., 2001). The mutation carried by *srf-6(yj13)* was located in exon 4. All three mutations altered amino acids that are conserved between NSY-1 and its closest human homolog, ASK-1 (Ichijo et al., 1997).

## Reagents

*C. elegans* strains

AT18 *srf-6(yj13)* II

AT24 *srf-6(yj15)* II

AT25 *srf-6(yj41)* II

Strains will be submitted to the Caenorhabditis Genetics Center.

**Acknowledgments:** This work was supported by DNA sequencing carried out by Igor Antoshechin at the Millard and Muriel Jacobs Genetics and Genomics Laboratory at California Institute of Technology. Some strains were provided by the Caenorhabditis Genetics Center, which is funded by NIH Office of Research Infrastructure Programs (P40 OD010440). The authors thank Mark Alkema for advice on genomic DNA isolation, colleagues Elizabeth Ryder and Jagan Srinivasan for comments on the manuscript, and Chris Link for suggesting that we try whole genome resequencing to identify *srf-6*.

## References

Afgan E, Baker D, Batut B, van den Beek M, Bouvier D, Cech M, Chilton J, Clements D, Coraor N, Grüning BA, Guerler A, Hillman-Jackson J, Hiltmann S, Jalili V, Rasche H, Soranzo N, Goecks J, Taylor J, Nekrutenko A, and Blankenberg D. (2018). The Galaxy platform for accessible, reproducible and collaborative biomedical analyses: 2018 update. *Nucleic Acids Res.* 46: 537-544. PMID: 29790989.

Grenache DG, Caldicott I, Albert PS, Riddle DL, and Politz SM. (1996). Environmental induction and genetic control of surface antigen switching in the nematode *Caenorhabditis elegans*. *Proc. Natl. Acad. Sci USA.* 93:12388-93. PMID: 8901591.

Hemmer RM, Donkin SG, Chin KJ, Grenache DG, Bhatt H, and Politz SM. (1991) Altered expression of an L1-specific, O-linked cuticle surface glycoprotein in mutants of the nematode *Caenorhabditis elegans*. *J Cell Biol.* 115: 1237-1247. PMID: 1955471.

Ichijo H, Nishida, E, Irie, K., ten Dijke, P., Saitoh, M, Moriguchi, T, Takagi, M, Matsumoto, K, Miyazono, K, and Gotoh, Y. (1997) Induction of apoptosis by ASK1, a mammalian MAPKK that activates SAPK/JNK and p38 Signaling Pathways. *Science* 275: 90-94. PMID: 8974401.

Minevich G, Park, Park DS, Blankenberg D, Poole, RJ, and Hobert, O (2012). CloudMap: A Cloud-Based Pipeline for Analysis of Mutant Genome Sequences. *Genetics* 192: 1249-1269. PMID: 23051646.

Sagasti, A, Hisamoto, N, Hyodo, J., Tanako-Hino, M, Matsumoto, K, and Bargmann, CI. (2001) The CaMKII Unc-43 Activates the MAPKKK NSY-1 to Execute a Lateral Signaling Decision Required for Asymmetric Olfactory Neuron Fates. *Cell* 105: 221-232. PMID: 11336672.

**Funding:** This work was partially funded by the Office of the Dean of Arts and Sciences, Worcester Polytechnic Institute, Worcester, MA.

**Author Contributions:** Nicholas D. Van Sciver: Formal analysis, Writing - review and editing. Jennifer O. Pulkowski: Formal analysis, Writing - review and editing. Samuel M. Politz: Conceptualization, Writing - original draft, Investigation.

**Reviewed By:** Maria Gravato-Nobre

**History:** Received June 18, 2019 Accepted June 27, 2019 Published July 4, 2019

**Copyright:** © 2019 by the authors. This is an open-access article distributed under the terms of the Creative Commons Attribution 4.0 International (CC BY 4.0) License, which permits unrestricted use, distribution, and reproduction in any medium, provided the original author and source are credited.

**Citation:** Van Sciver, ND; Pulkowski, JO; Politz, SM (2019). Three *C. elegans srf-6* mutants carry *nsy-1* mutations (*srf-6* is *nsy-1 I*). *microPublication Biology.* <https://doi.org/10.17912/micropub.biology.000127>

